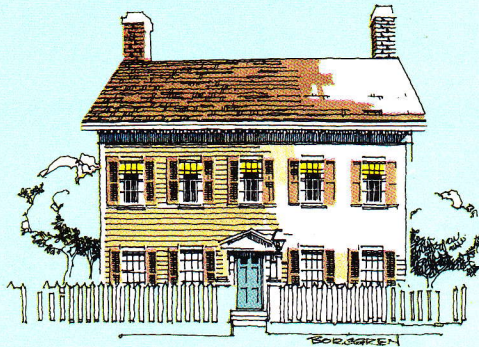
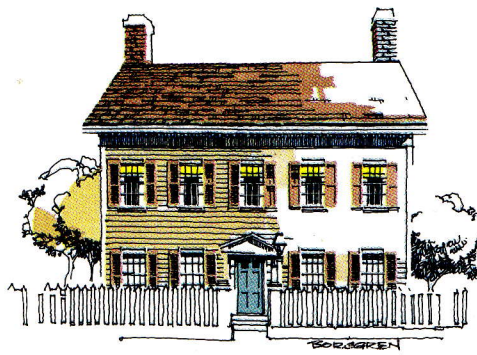


A  
PROCLAMATION  
FOR THE BENEFIT AND  
COMMODIOUS COMFORT  
OF THE MINNESOTA PEOPLE



*A New Community  
Imbued With All The Rich Character  
Of Early American Homes*





## Commemorating the classic beauty of Colonial architecture.

Away from traditional European influences, Colonial America developed a classic form of architecture all its own. Combining beauty with comfort, this stately, dignified style has proven through the years to be one of enduring appeal. Centex Homes is now proud to bring this Colonial style to life for you at Williamsburg Village, in a series of homes uniquely suited to the American way of life.

Located in a park-like setting in West Bloomington, Williamsburg Village single-family homes recall the time when a man built his home by hand, taking meticulous care with each and every detail. Fine craftsmanship is visible everywhere – from the solid frame to the fine oak cabinets. It's the kind of dedication to quality that has made Centex one of America's most respected home builders for over 30 years.

This traditional craftsmanship looks even better alongside all the added conveniences found in a Williamsburg Village home. Features like self-cleaning ovens, dishwashers, and clad wood windows add tremendous value, while contributing to a better quality of life.

So welcome to Williamsburg Village, a classic reflection of colonial life adding new luster to the bright future of West Bloomington and the Twin Cities.

Designed and built by

 **Centex Homes Corporation**







Bob

# Combining the quality of yesteryear with the conveniences of today.

*These luxury features are included in your Centex Home:*

## KITCHENS

- ◆ Furniture Quality Oak Kitchen Cabinets
- ◆ Self-Clean Electric Oven and Range
- ◆ Range Hood and Fan
- ◆ Built-in 4-Cycle Dishwasher
- ◆ Sound Shielded Garbage Disposal
- ◆ Double Bowl Stainless Steel Sink
- ◆ Single Lever Faucet Control with Sprayer
- ◆ Rolled Edge Decorator Countertops
- ◆ Armstrong Cambray Cushioned Vinyl No-Wax Flooring
- ◆ Kitchen Pantries, as shown
- ◆ Kitchen Breakfast Areas, as shown

## BATHS

- ◆ Ceramic Bath Wall Tile
- ◆ Shower Stall with Tempered Glass Shower Doors, as shown
- ◆ Furniture Quality Oak Vanities with Marbleized Vanity Tops
- ◆ King Size Bathroom Mirrors
- ◆ Armstrong Cambray Cushioned Vinyl No-Wax Flooring
- ◆ Troublefree Single Lever Faucets

## INTERIOR FEATURES

- ◆ Embossed Mahogany Trim with Legacy Doors
- ◆ Clad Wood Windows with Insulated Glass and Screens
- ◆ Wall-to-Wall 25-oz. Nylon Carpeting
- ◆ Insulated French Doors, (Most Models)
- ◆ Decorator Light Fixtures
- ◆ Pre-Wired for Telephone
- ◆ Insulated, Embossed Steel Exterior Doors with Magnetic Weatherstripping

## HOME SITE

- ◆ City Water, Sewer, Streets & Street Lights
- ◆ All Assessments Paid
- ◆ All Underground Utilities
- ◆ Courtyard Homes: Association Maintained Common Driveway

## LANDSCAPING

- ◆ Courtyard Homes:  
Entire Yard Sodded  
10 Large Trees Installed Per Court
- ◆ Single Lot Homes:  
Front Yard Sodded  
2 Large Trees Installed

## EXTERIOR FEATURES

- ◆ Maintenance-Free Aluminum Siding and Trim in Choice of Professionally Coordinated Colors
- ◆ Asphalt Driveway

## UTILITIES

- ◆ 100 AMP Electric Service with Circuit Breakers
- ◆ Plumbing and Electrical Hook-ups for Washer
- ◆ Vent for Dryer
- ◆ Automatic Gas-Fired Forced Air Furnace
- ◆ Glass Lined 40 Gallon Gas Water Heater

## FOR YOUR PEACE OF MIND

- ◆ Insulation: Average of R\*40 (13½" of Blown Fiberglass) in attic areas; R\*38 (12" Fiberglass Batts) in vaults (some models); R\*19 (6" Fiberglass Batts) in floors over unheated areas; R\*13 (3½" Fiberglass Batts) in exterior walls & R\*6 (¾" foil-faced insulation board) over exterior framed walls; R\*5 (1" styrofoam insulation board) on foundation walls below grade.
- \* The higher the R-value, the greater the insulating power. Ask our Sales Representative for the manufacturer's fact sheet on R-values.
- ◆ 235 lb Seal-Tab Shingles
- ◆ 2 x 10 Kiln Dried Floor Joists
- ◆ ¾" Tongue and Groove Subflooring Glued and Nailed
- ◆ Deadbolt Security Lock on Exterior Door
- ◆ Smoke Detector
- ◆ Positive Drainage of Storm Water Directed to Storm Sewer System

**The Centex Warranty provides you with a written, transferrable warranty against defects in:**

- a) Workmanship and Material for 1 Year
- b) The Mechanical Systems for 2 Years
- c) The Structural Integrity for 10 Years

*Every effort has been made to accurately depict the units and the project in this brochure. In the event of any conflict between the brochure, the model and the plans and specifications for the project, the plans and specifications shall control.*

*Also, the completed homes may vary from the brochure, the model and the plans to an extent consonant with normal trade, custom, practice and tolerance within the construction industry.*

*The renderings are an artist's conception and are not intended to be actual depictions of the buildings, walks, driveways, landscaping or exterior colors. Please see our Sales Representatives should you have any questions.*

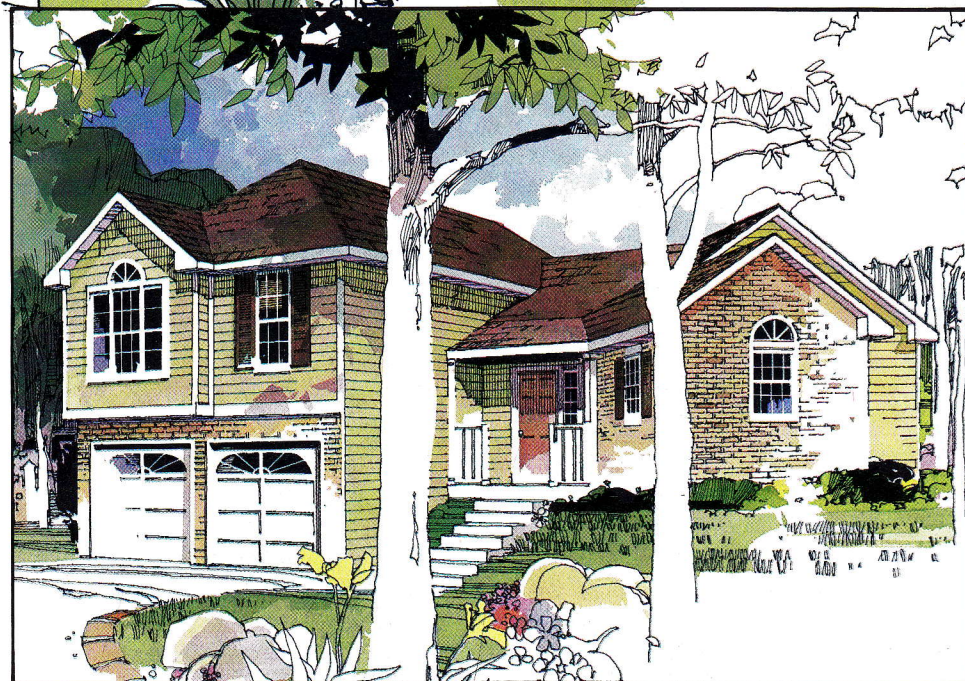
Continuing a Policy of Constant Research and Improvement, Centex Homes Reserves the Right to Make Specification and/or Plan Changes Without Notice or Prior Obligation.

# Cambridge

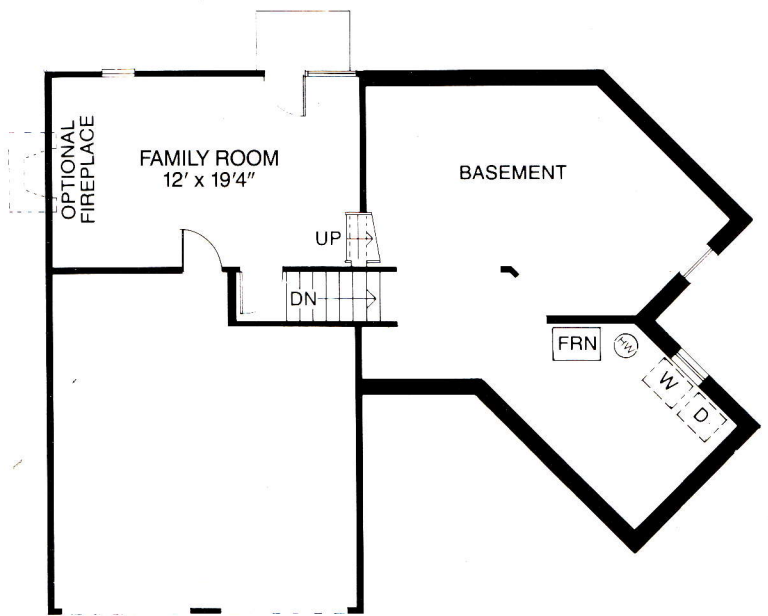
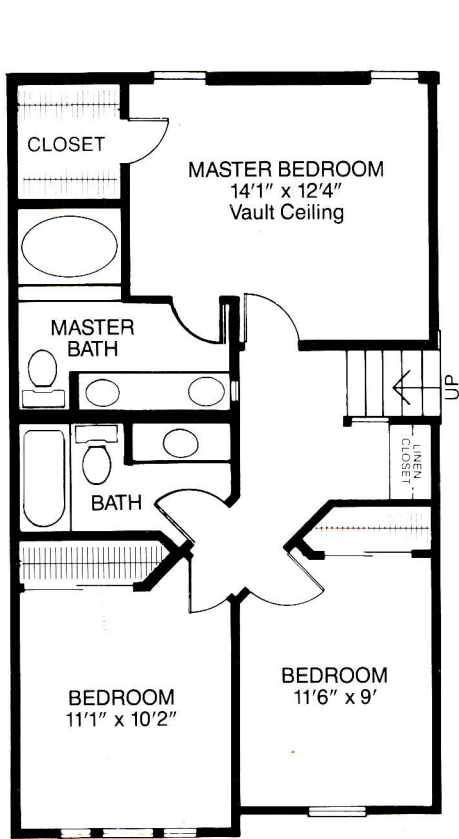
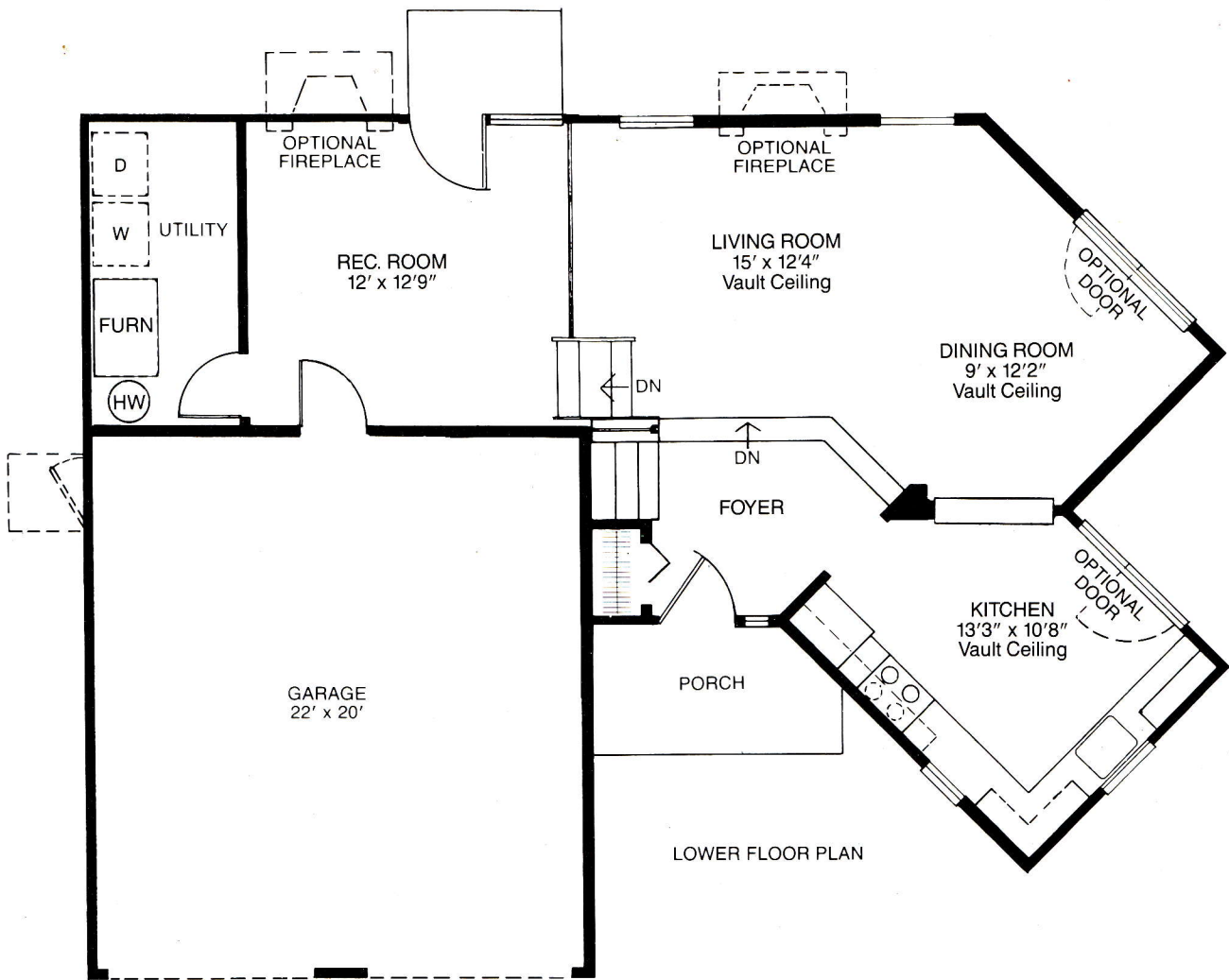
Family-sized three-bedroom split-level with two full baths (master bathroom has a dramatic oval step-up tub), walk-in master bedroom closet, spacious living and dining rooms with cathedral ceilings, large deluxe eat-in kitchen, finished recreational room with patio and two-car garage.



Exterior A

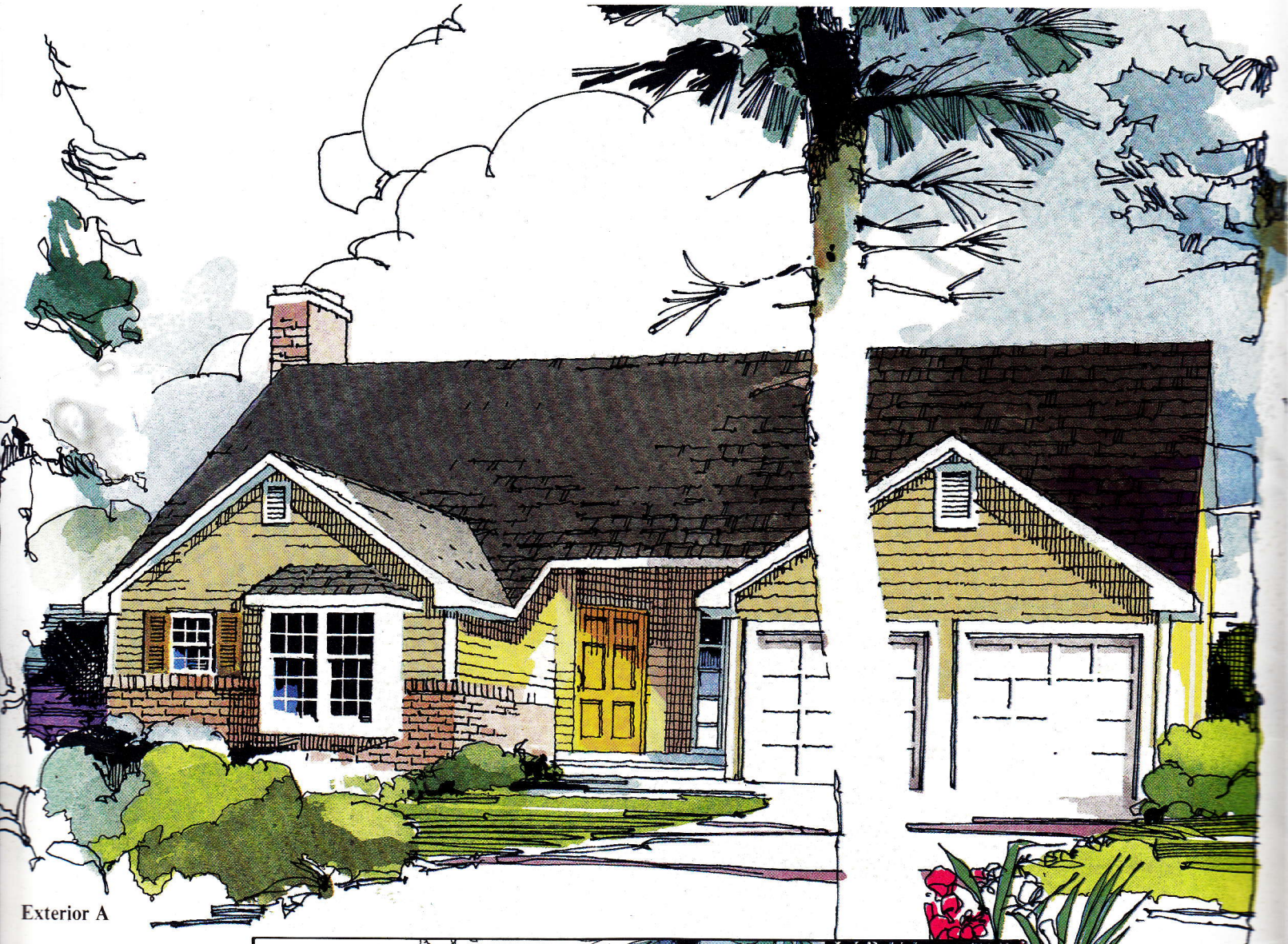


Exterior B

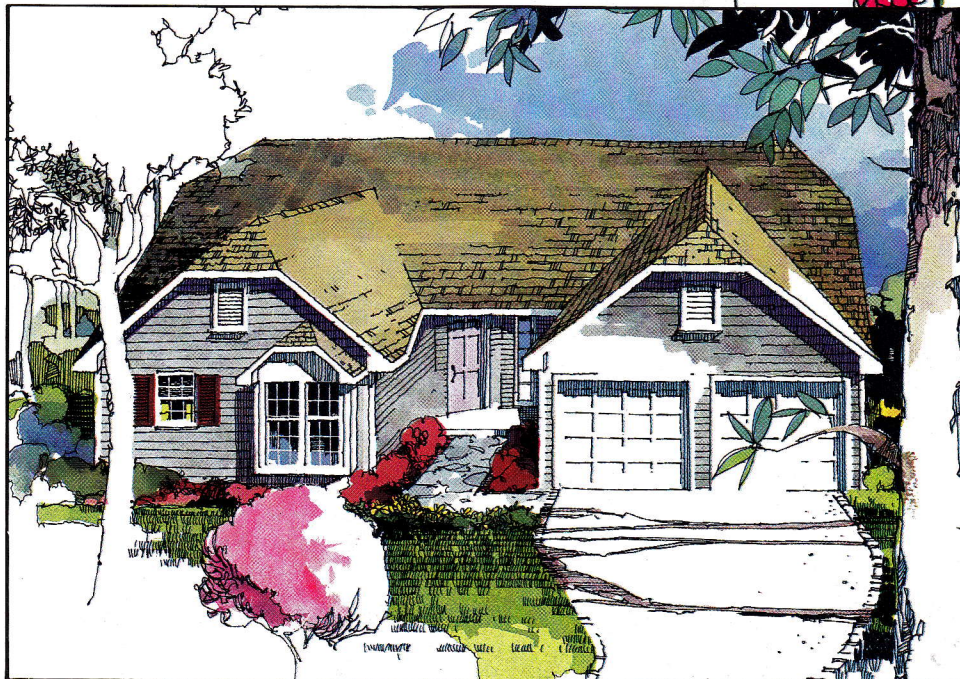


# Glenbriar

Charming two-bedroom home with a choice of two full baths or one luxury bathroom, striking cathedral ceilings in the living room and dining room, a well-designed kitchen with dinette area, and two-car garage. (Lower floor expansion space easily finished to add two generous bedrooms, another bath, and a large family room.)

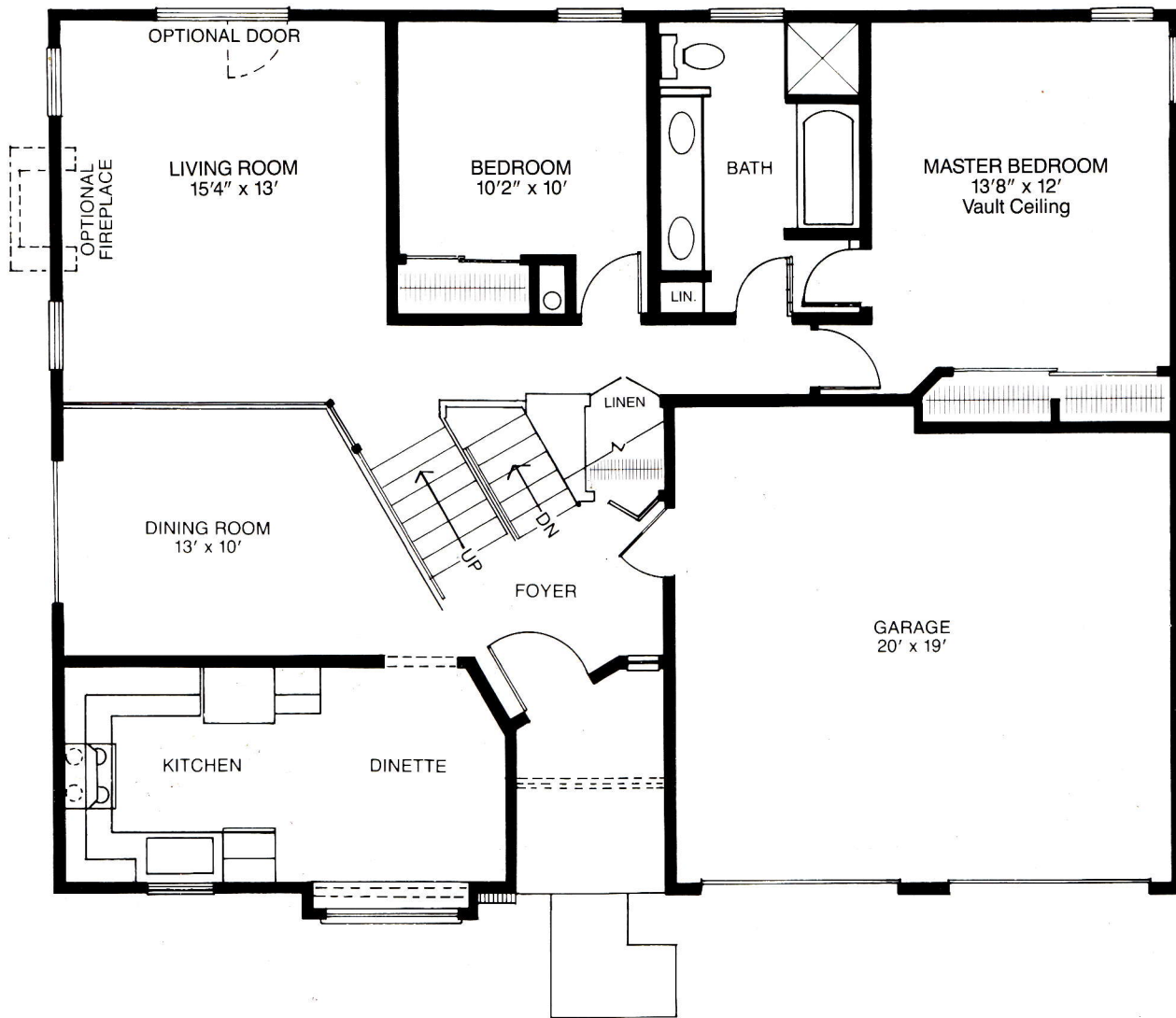


Exterior A

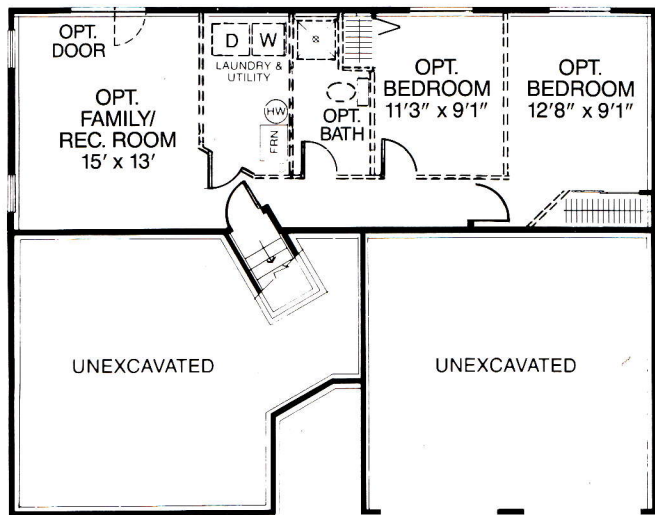


Exterior B

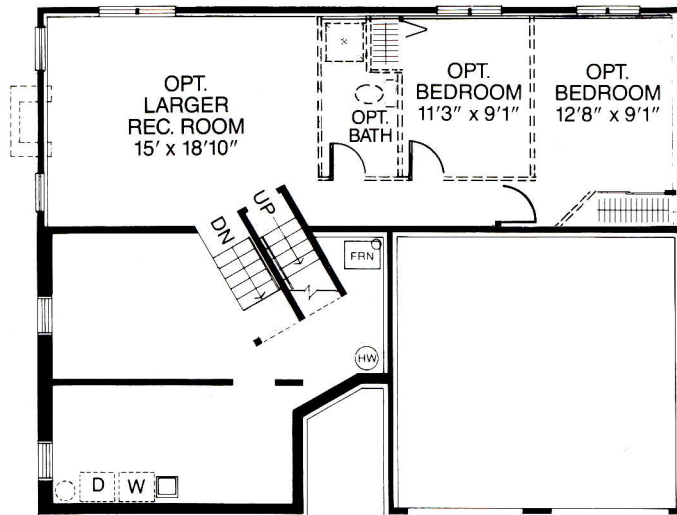




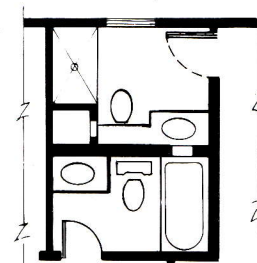
UPPER FLOOR PLAN



LOWER FLOOR PLAN



ALTERNATE BASEMENT PLAN



ALTERNATE MASTER BATH PLAN

# Ashton

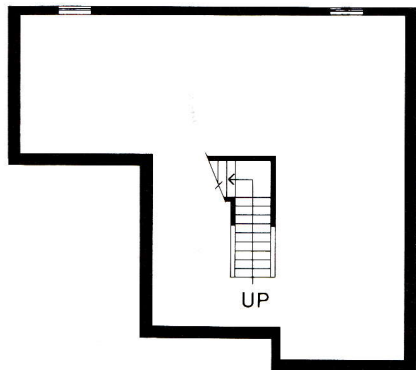
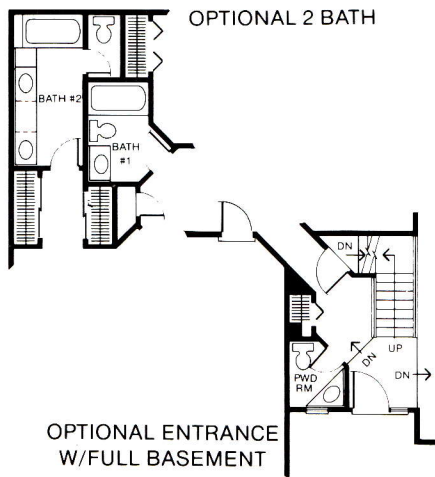
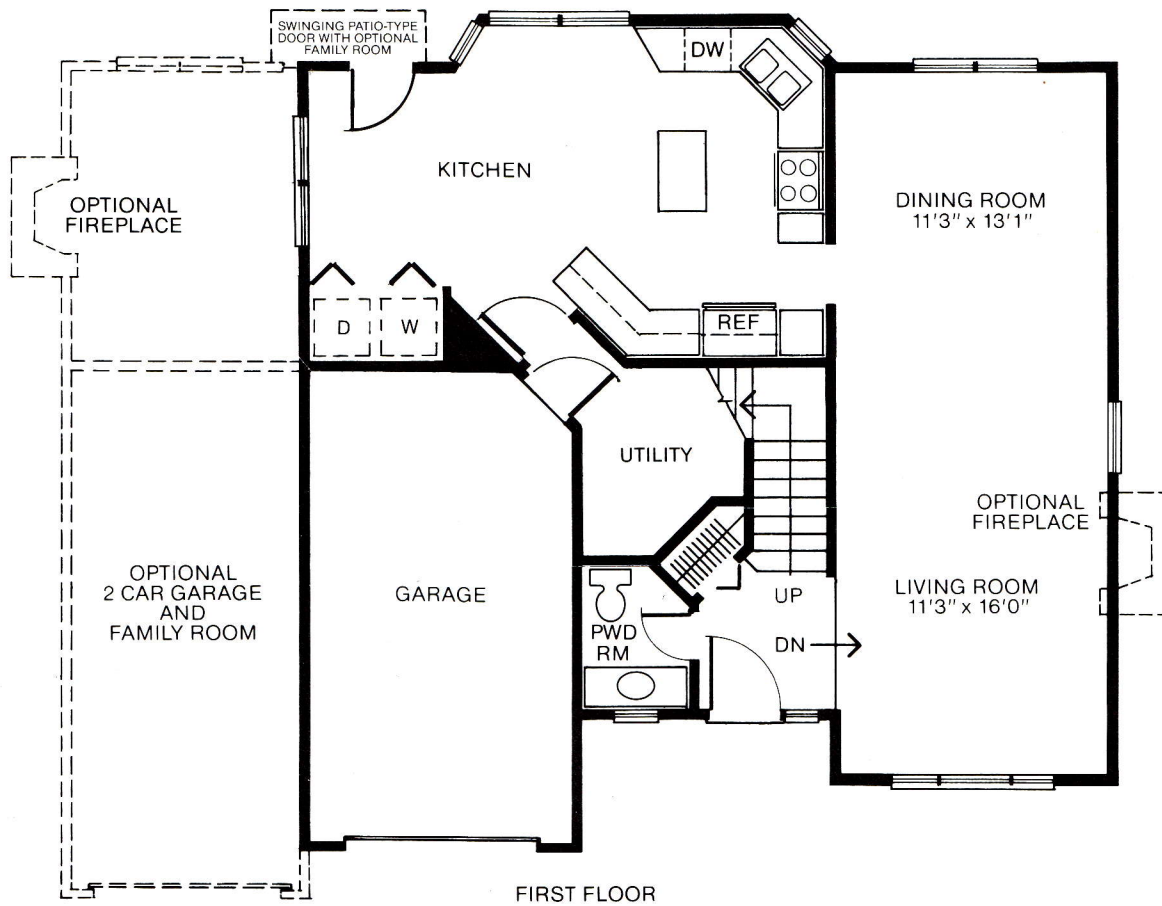
Luxurious three-bedroom two-story with versatile loft (which could be made into a study or children's play area), living room with cathedral ceiling, dining room, deluxe kitchen with breakfast area, wardrobe closet in master bedroom, 1½ baths (with full bath containing a dramatic raised corner tub, separate shower, and two-basin vanity) or 2½ baths, and one-car garage (two-car optional).



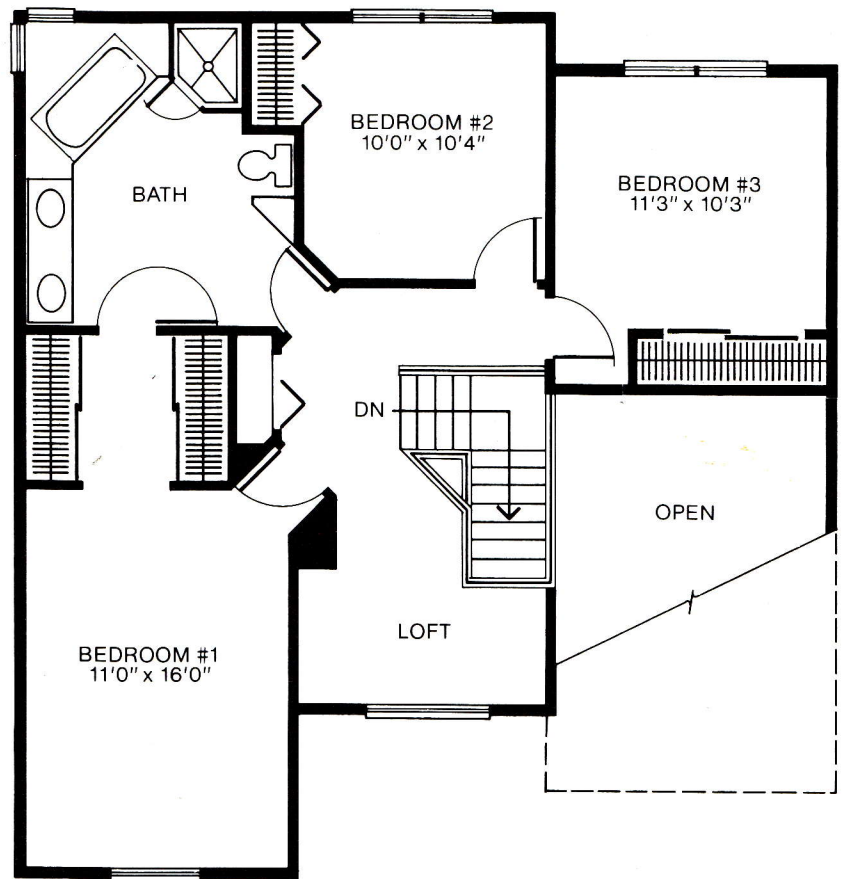
Exterior B



Exterior A



OPTIONAL BASEMENT



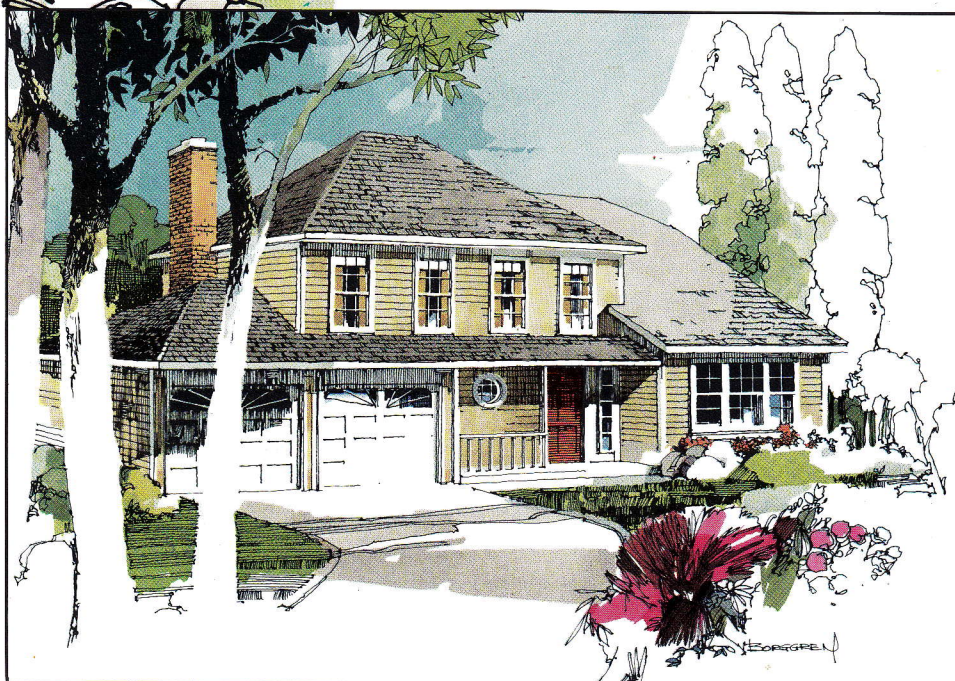
SECOND FLOOR

# Stratford

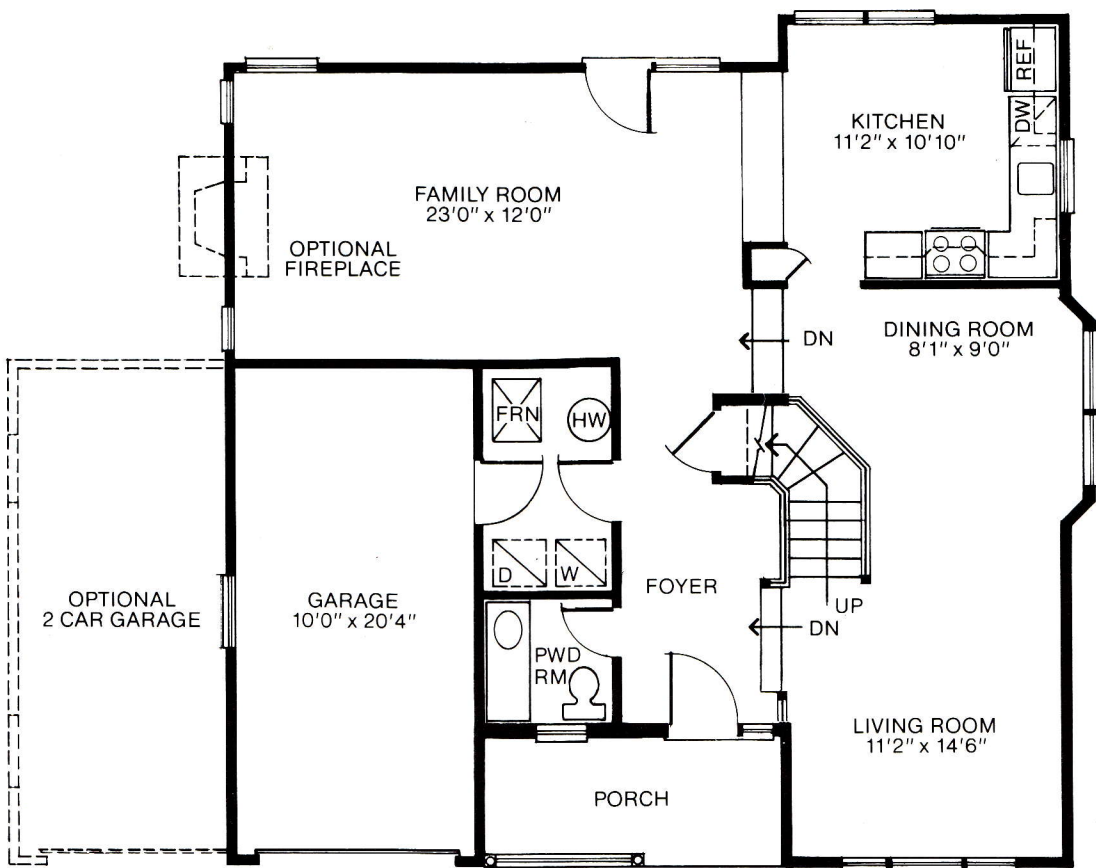
Impressive three-bedroom two-story with 2½ baths, large living room and separate dining room with cathedral ceilings, deluxe kitchen with breakfast area, pantry, first floor laundry, master bedroom with vaulted ceiling and wardrobe closet, distinctive entryway and one-car garage (two-car optional).



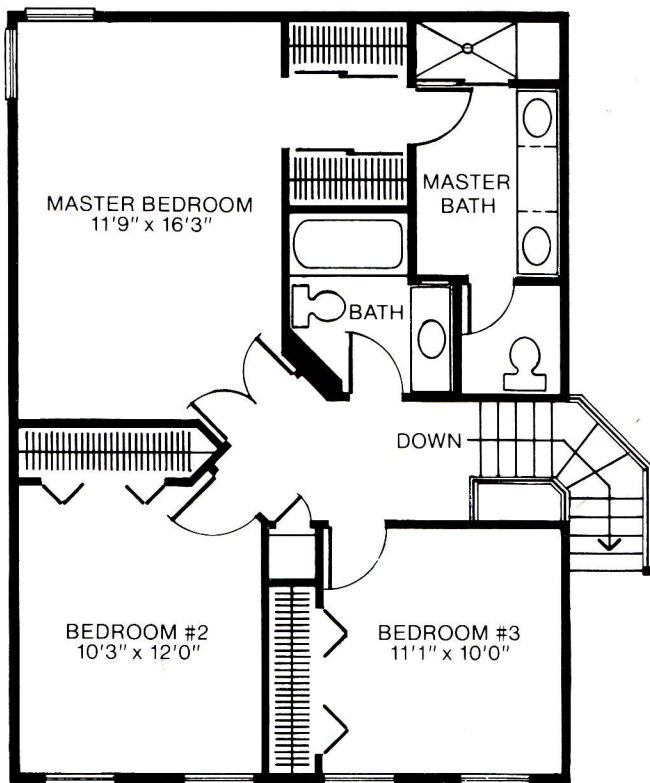
Exterior A



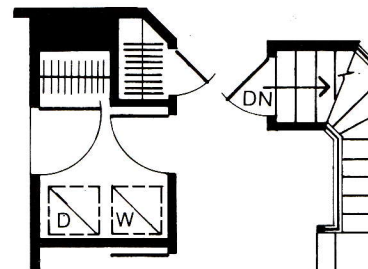
Exterior B



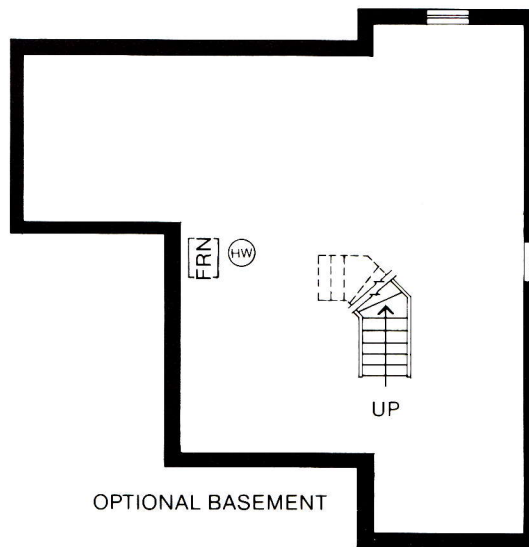
FIRST FLOOR



SECOND FLOOR



PARTIAL FIRST FLOOR PLAN W/OPTIONAL BASEMENT



OPTIONAL BASEMENT

# Shelbourne

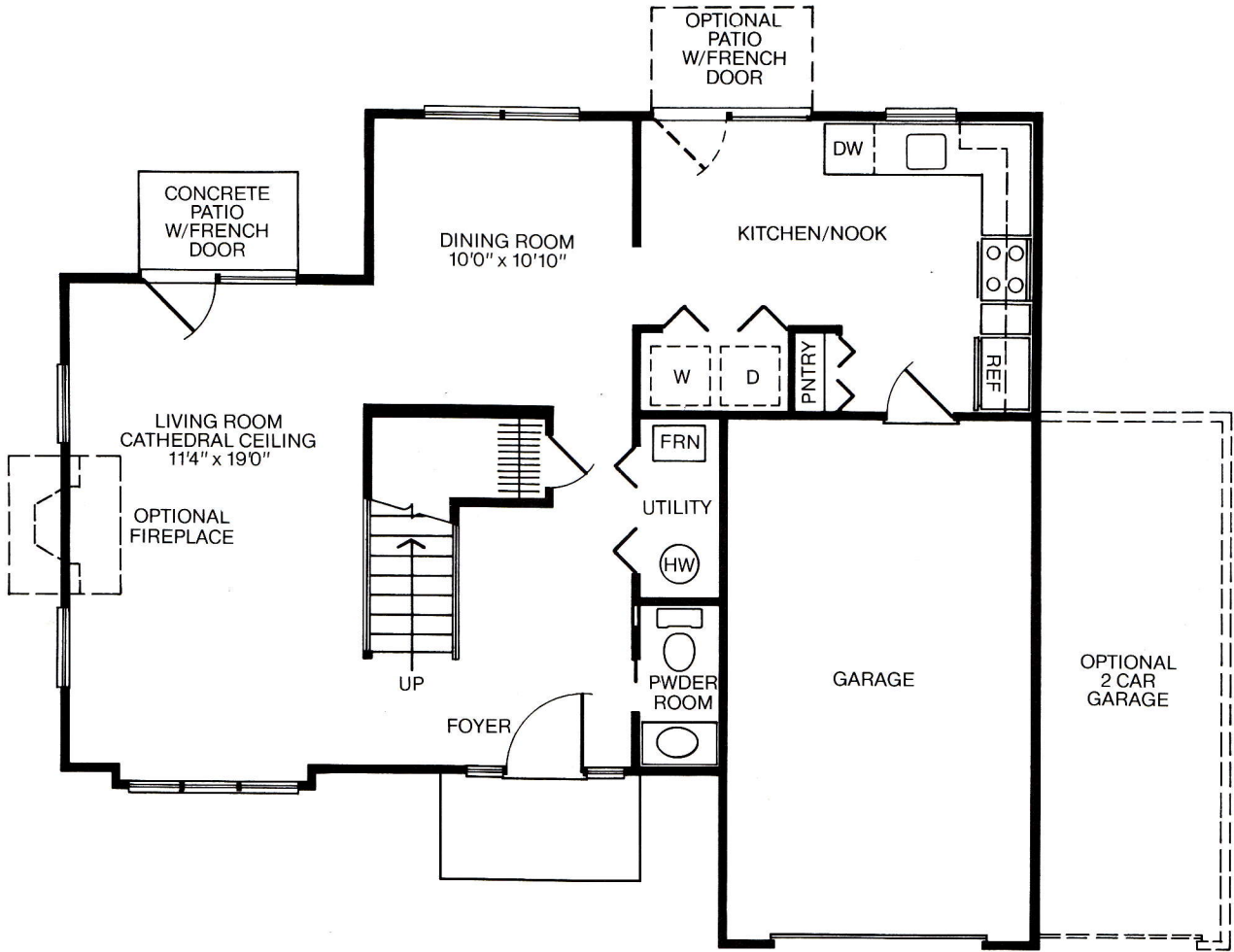
Elegant three-bedroom two-story with two and ½ baths, spacious living room with cathedral ceiling and separate dining room, deluxe kitchen with breakfast area, first floor laundry, wardrobe closet in master bedroom, and one-car garage (two-car garage optional).



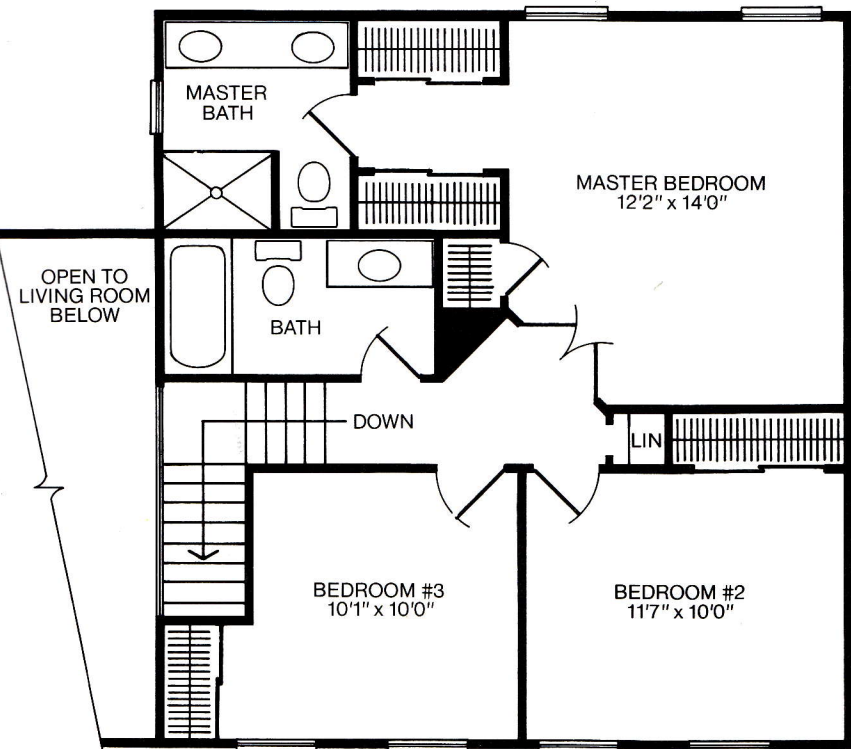
Exterior B



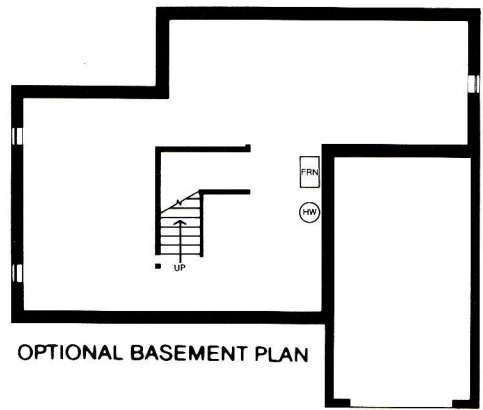
Exterior A



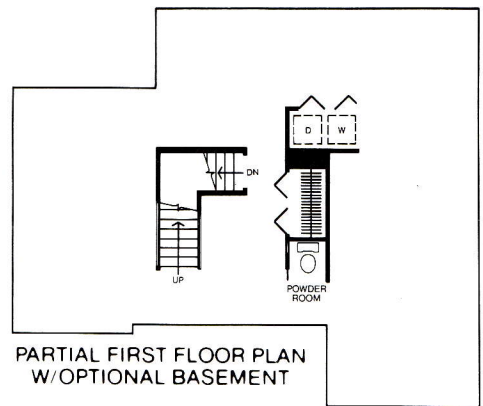
FIRST FLOOR



SECOND FLOOR



OPTIONAL BASEMENT PLAN



PARTIAL FIRST FLOOR PLAN W/OPTIONAL BASEMENT

Front window locations vary with exteriors. Ask your Sales Representative for details.

# Aldridge

Attractive three-bedroom split-level with a dining room, living room with volume ceiling, large family room, deluxe kitchen, two full baths, wardrobe closet, utility room and two-car garage.

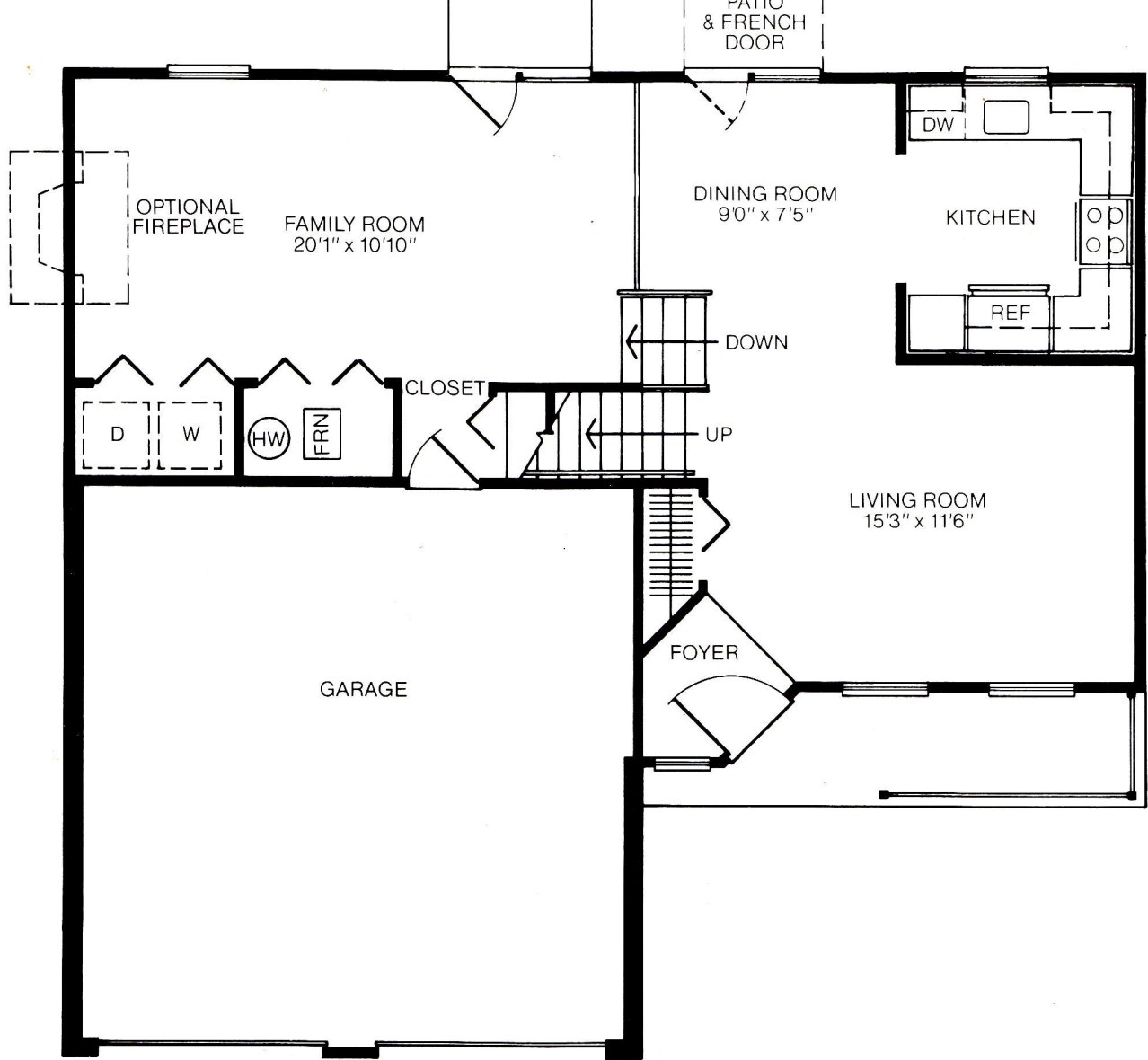


Exterior B

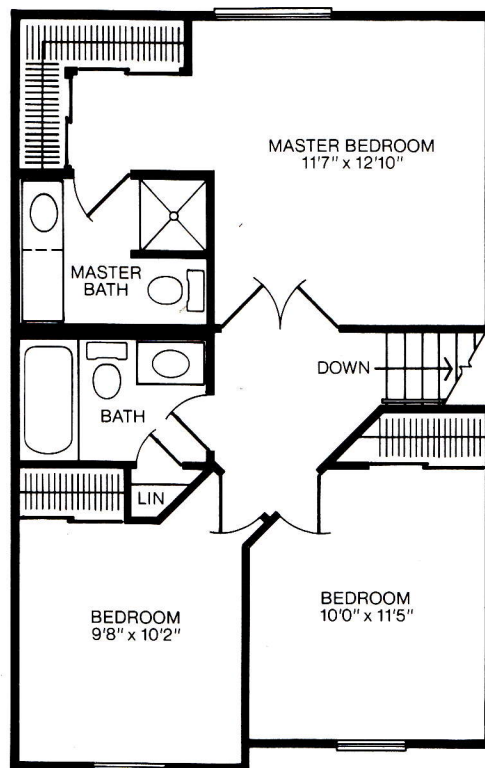


Exterior A





FIRST FLOOR



SECOND FLOOR

# Bristol

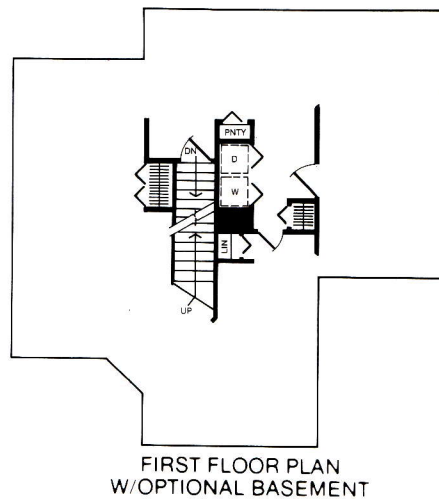
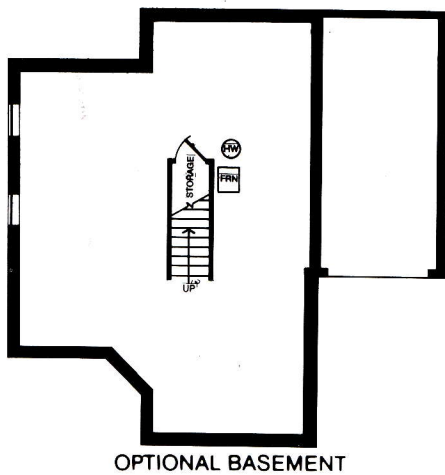
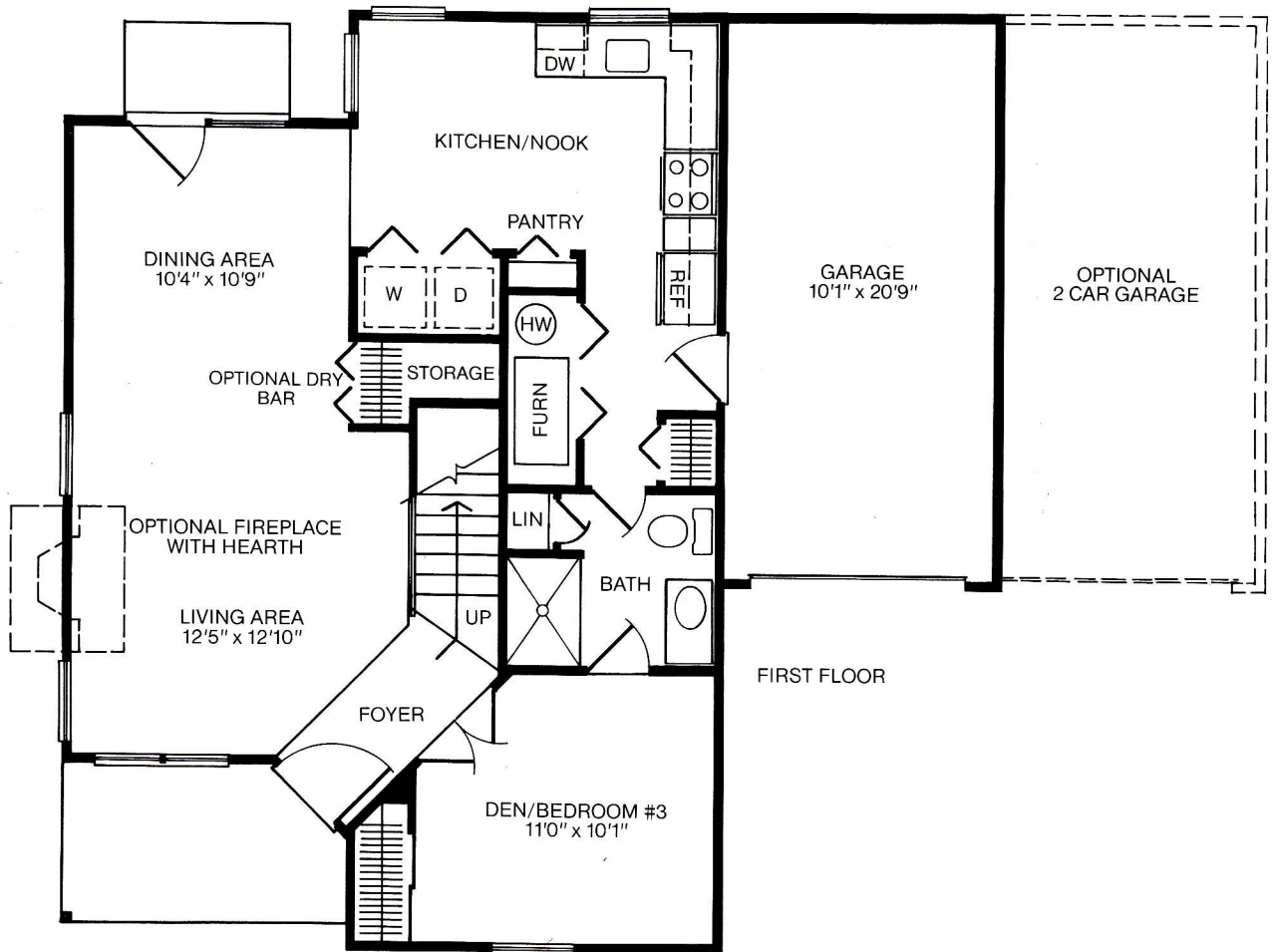
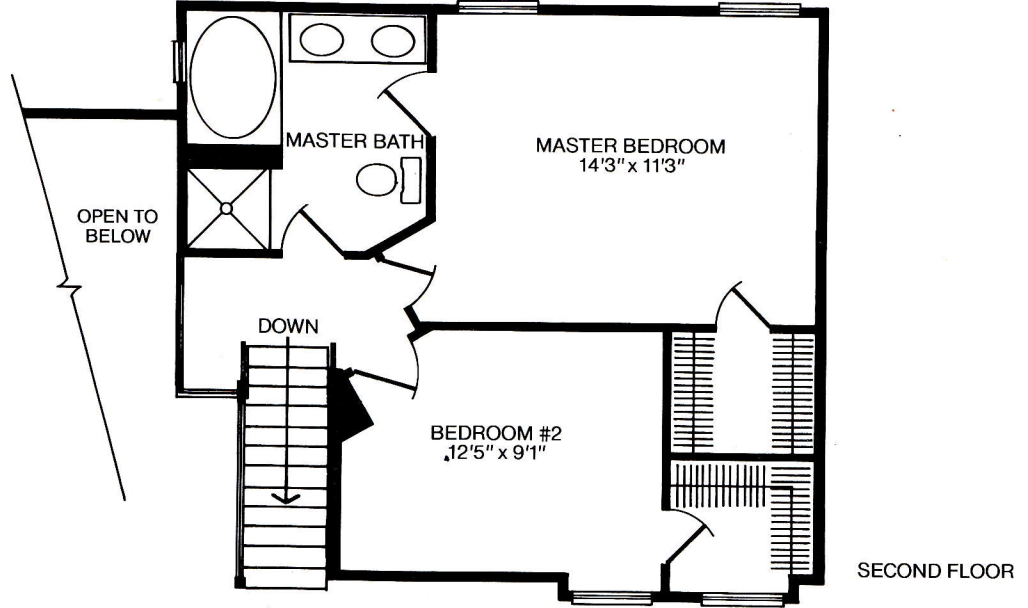
Versatile two or three-bedroom two-story with two full baths, living room with cathedral ceiling, dining room, deluxe kitchen with breakfast area, first floor laundry, walk-in closet in master bedroom, and one-car garage (two-car garage optional).



Exterior B

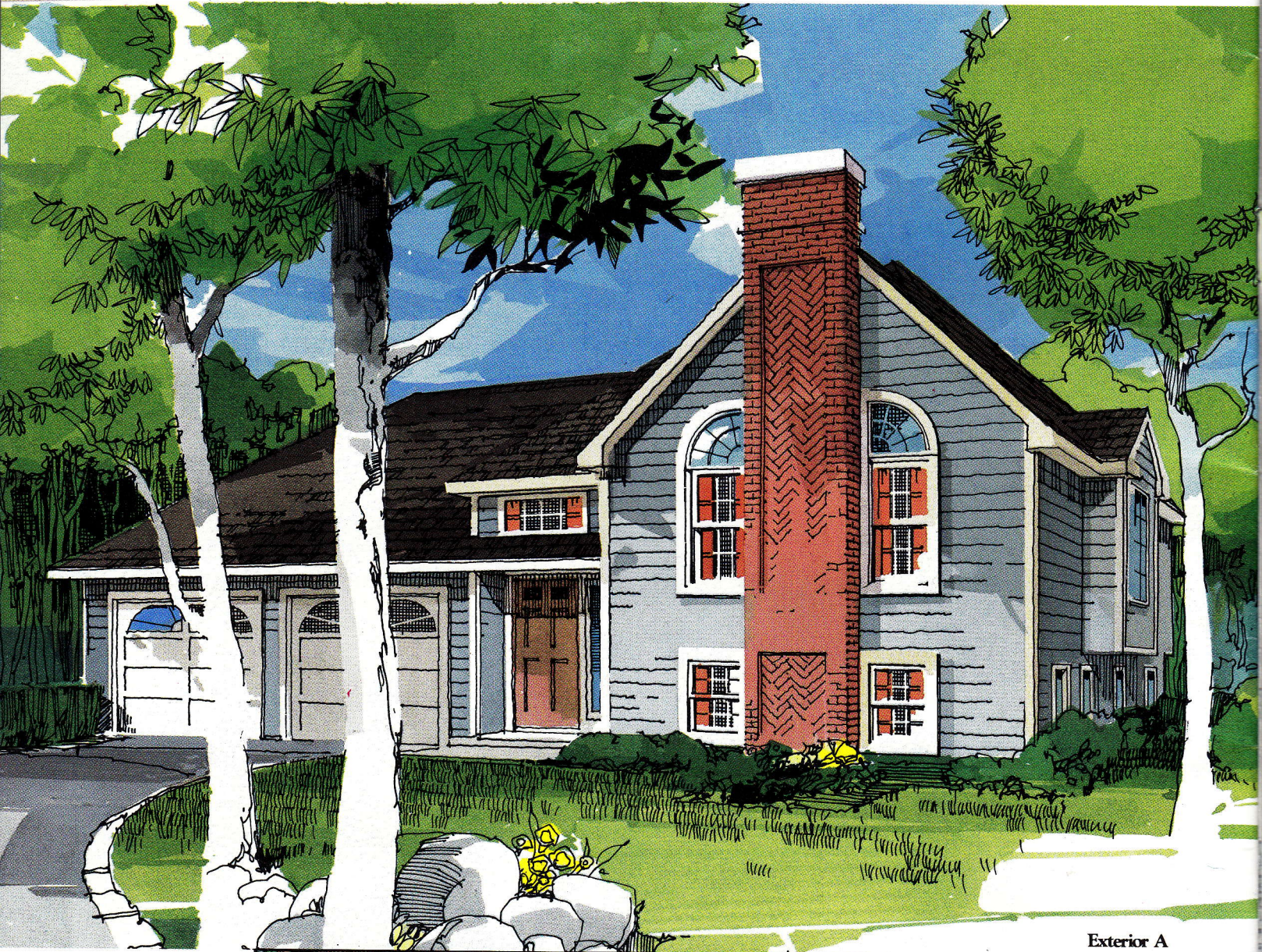


Exterior A

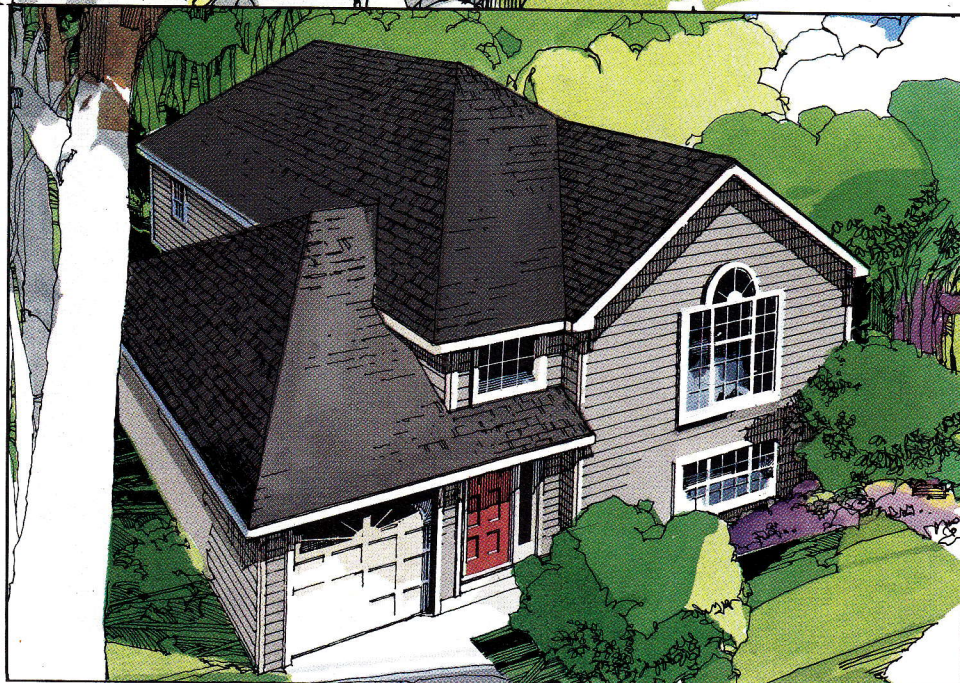


# Huntington

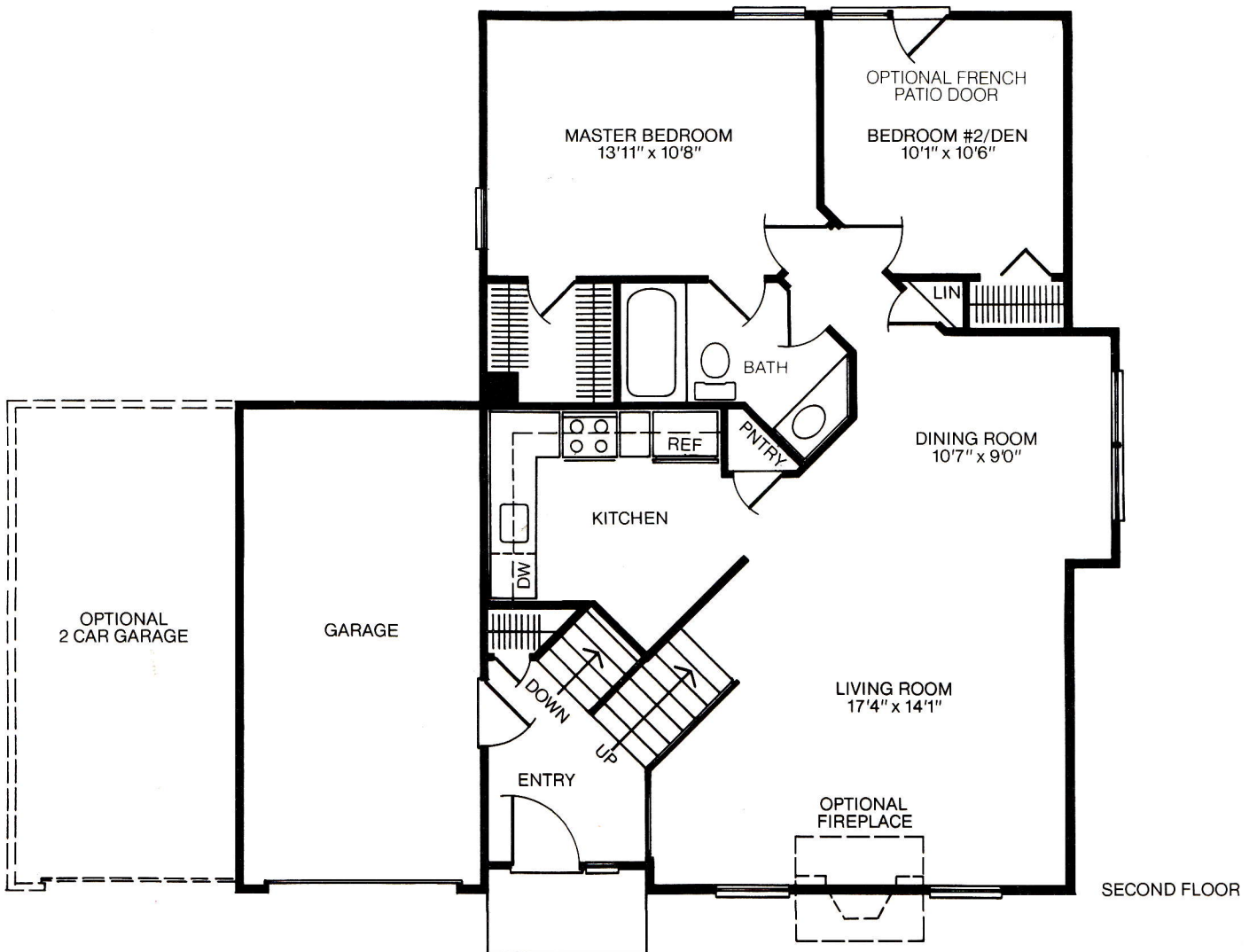
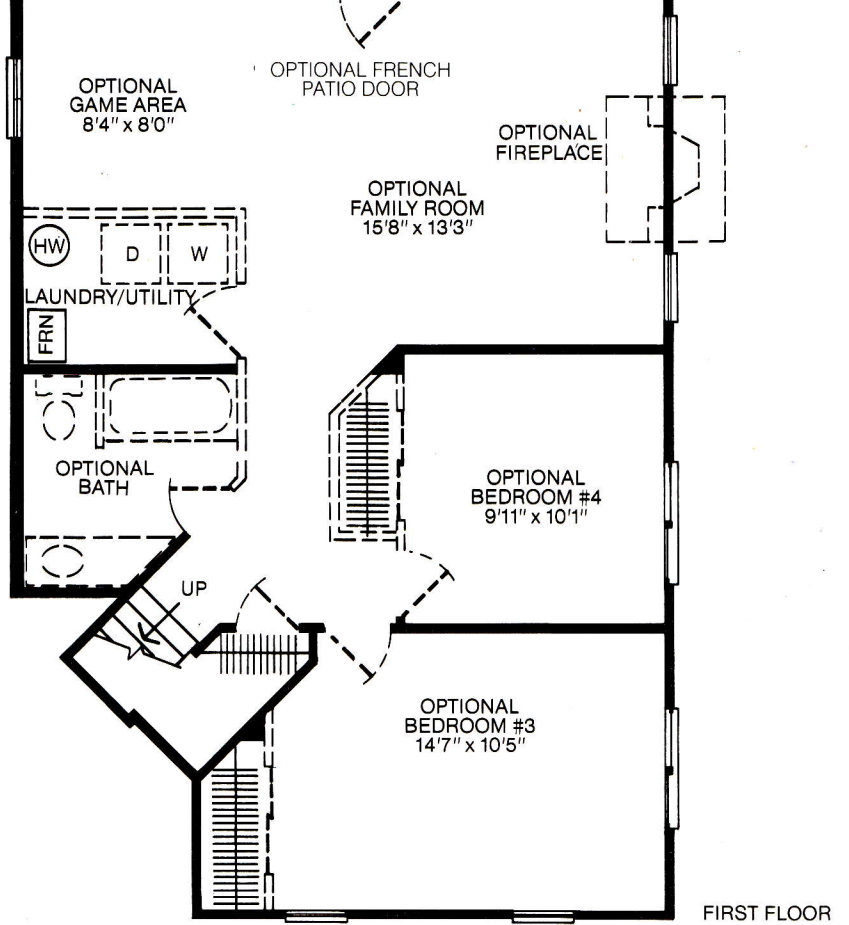
Spacious two-bedroom split-level with full bath, large living/dining room with cathedral ceiling, deluxe kitchen with breakfast area, pantry, walk-in closet, attractive entryway and one-car garage (two-car garage optional). Also includes expansion room for two more bedrooms, another bath and a huge recreation room.



Exterior A

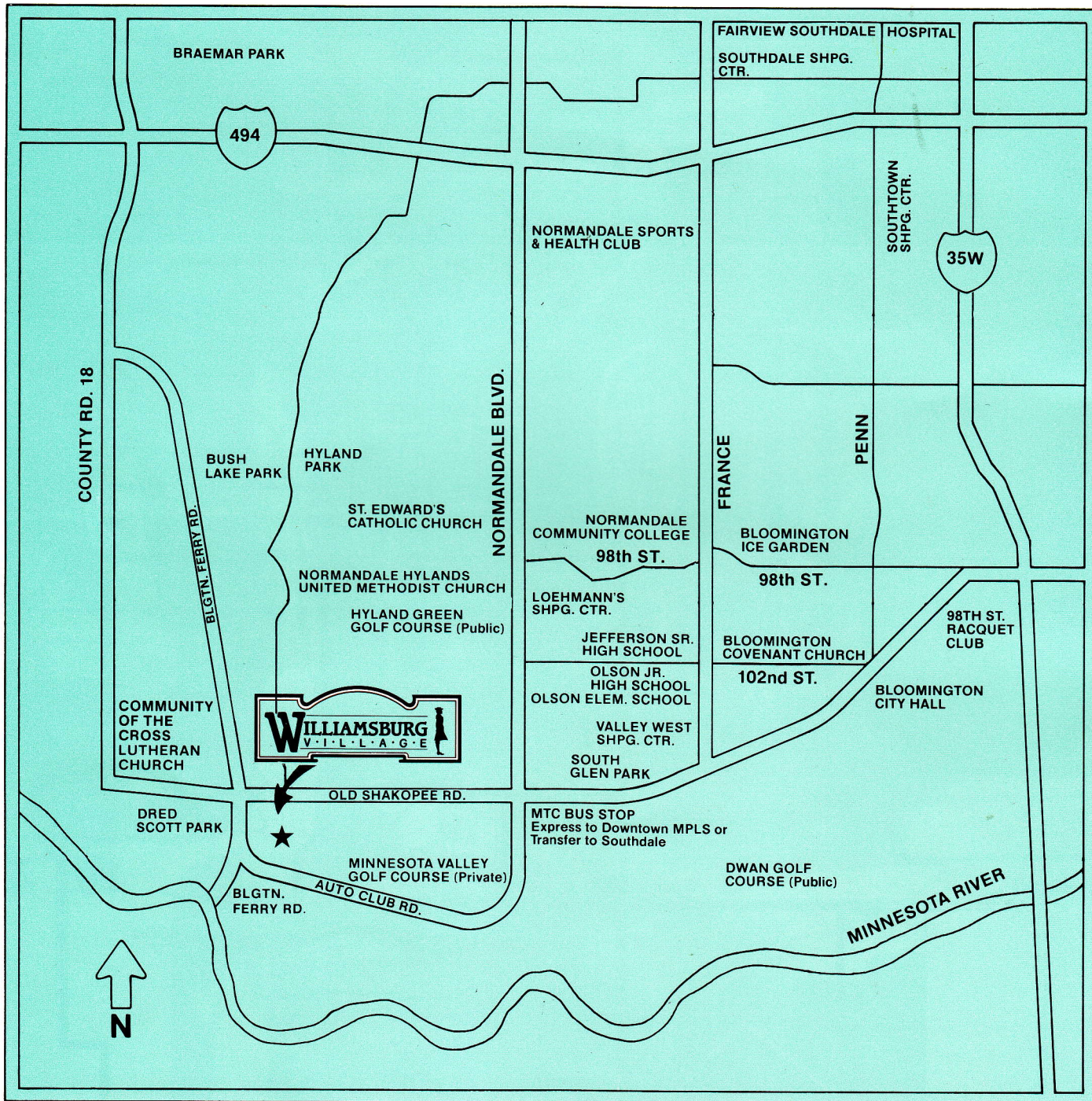


Exterior B



Front window locations vary with exteriors. Ask your Sales Representative for details.

# WILLIAMSBURG V·I·L·L·A·G·E



Beautiful West Bloomington provides excellent community services as well as a wide range of recreational opportunities. There are fine elementary and high schools in the area, as well as Normandale College.

Right across the street from Williamsburg Village will be a charming little shopping center with a gas station, day care center and sundry other shops.

Only minutes away are the County Library, Bloomington Civic Theatre, the Bloomington Symphony Orchestra, plus many restaurants, movie theatres and entertainment spots.

Across the street is one of West Bloomington's most active recreational centers, Dred Scott Park, with softball diamonds and lighted tennis courts—all just a few steps away. There are also health and racquetball clubs, hiking and jogging trails, the Minnesota River, and many lakes very close by.

And when you need to travel further, I-35W and I-494 are just a few miles away, making the Met Center, the airport, and the entire Twin Cities area easily accessible.

Designed and built by  
**Centex Homes Corporation**

Williamsburg Village Homes

